

### III. Simulated Images of a Star Field

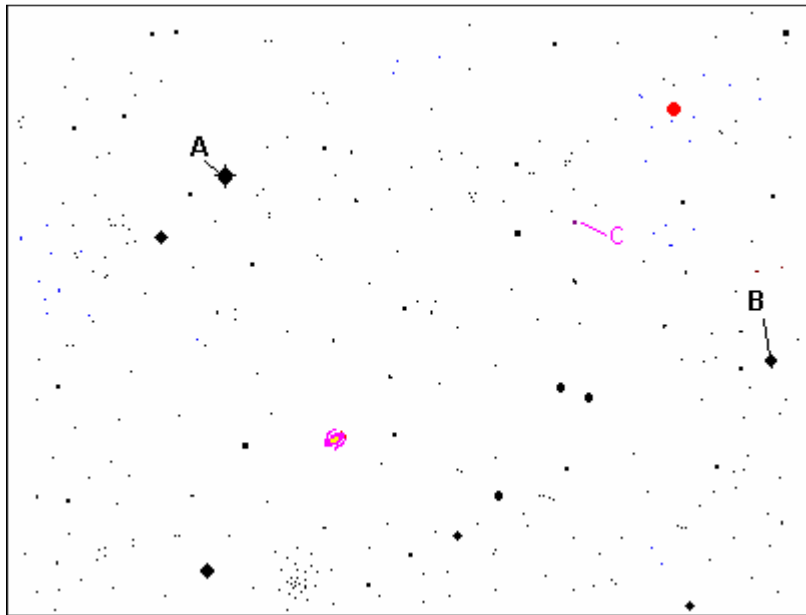


CHART 1

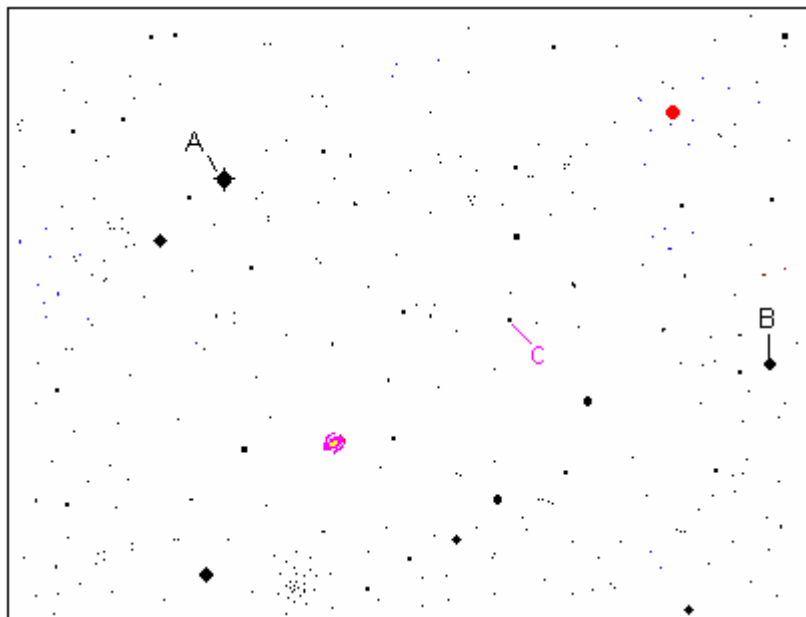


CHART 2

## Stellar Parallax Answer Page

Measured distance between stars A and B in cm to 2 decimal places: \_\_\_\_\_ = 4.00"

Computed chart scale from above data (divide arcseconds by cm): \_\_\_\_\_ ("/cm)

Measured x and y coordinates of Star C on Chart 2: x = \_\_\_\_\_ cm, y = \_\_\_\_\_ cm.

From Chart 1:

Measured total annual displacement of Star C in cm = ..... \_\_\_\_\_ cm.

Total annual angular displacement (TAAD) in arcseconds = ..... \_\_\_\_\_ .

Parallax,  $p$ , of Star C in arcseconds ( $1/2$  of TAAD) = ..... \_\_\_\_\_ .

Heliocentric distance of Star C in parsecs ( $HD = 1/p$ ) = ..... \_\_\_\_\_ pc.

